



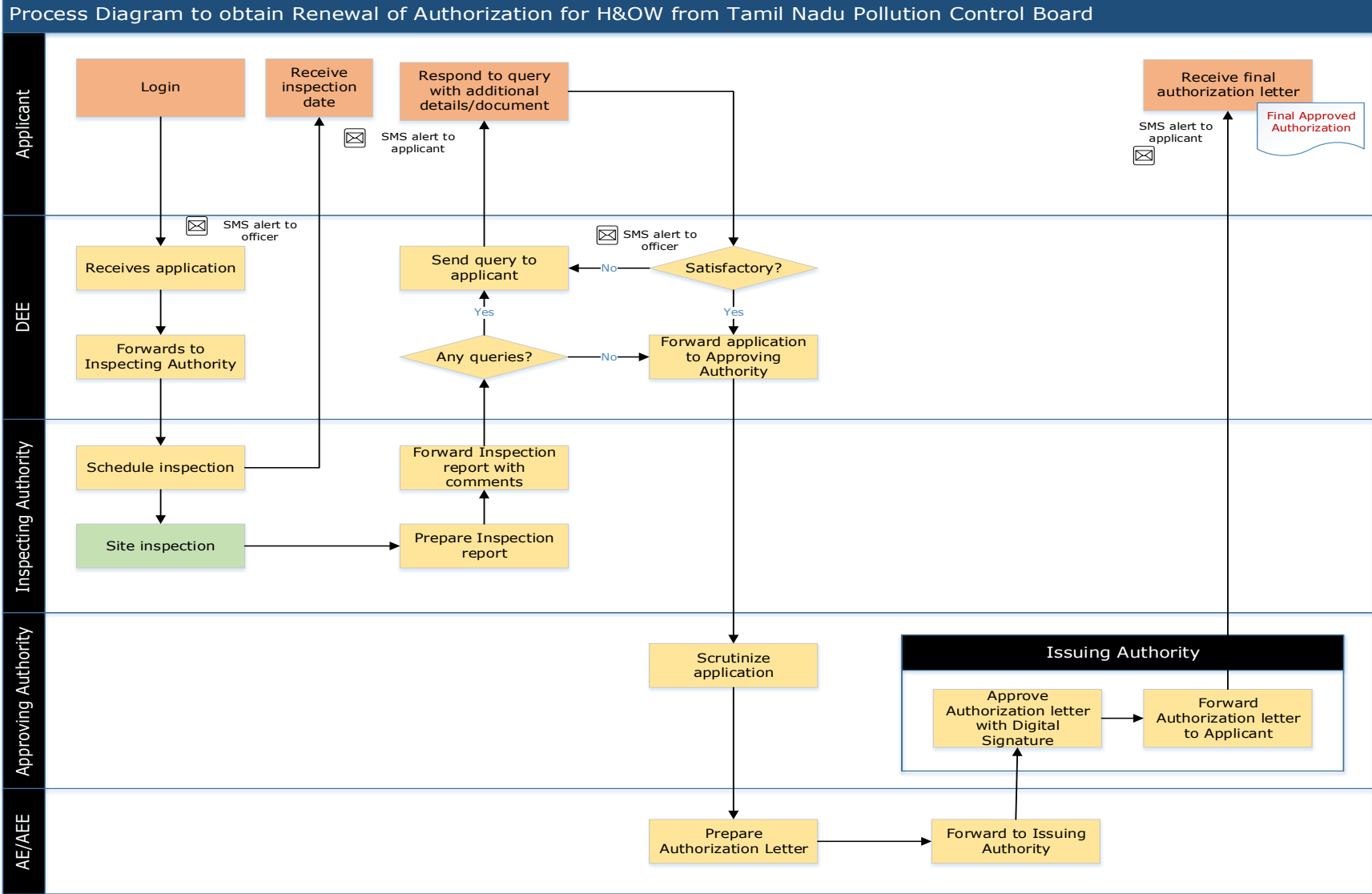
Renewal of Authorization for Hazardous Waste Management from Tamil Nadu Pollution Control Board (TNPCB)

Procedure, List of Supporting Documents and Fees

Table of Contents

1 Procedure	3
2 Checklist of supporting documents	5
3 Fees.....	5

1 Procedure



PCB - Various authorities in the application process

Type of Application	Type of Authority	17-Category	Red - Large	Red - Medium	Red - Small	Orange - Large	Orange - Medium	Orange Small - and all Green
Authorization under Hazardous and Other Waste Management Rules, 2016	Inspection Authority	JCEE (M)	DEE	DEE	AE/AEE	AE/AEE	AE/AEE	AE/AEE
	Approving Authority	Member Secretary	Member Secretary	Member Secretary	JCEE (M)	JCEE (M)	JCEE (M)	DEE
	Issuing Authority	Sector JCEE	Sector JCEE	Sector JCEE	JCEE (M)	JCEE (M)	JCEE (M)	DEE

JCEE: Joint Chief Environmental Engineer

DEE: District Environmental Engineer

AEE: Assistant Environmental Engineer

<This space has been intentionally left blank>

2 Checklist of supporting documents

#	Item
1	Covering Letter
2	Copy of the latest consent order/renewal issued
3	Manufacturing process with flow sheet indicating Input, Output and sources of generation of hazardous waste
4	Copy of Agreement made with the TSDF/Actual users
5	Emergency Response Plan (ERP) which should address procedures for dealing with emergency situations (viz. Spillage or release or fire) as specified in the guidelines of CPCB
6	Undertaking or declaration to comply with all provisions including the scope of submitting bank guarantee in the event of spillage, leakage or fire while handling the hazardous and other waste
7	Annual returns furnished for last three years in case of Renewal of Authorisation
8	Layout map of the TSDF- For TSDF
9	Copy of prior Environmental Clearance along with compliance report- For TSDF
10	Installed capacity as per registration issued by the District Industries Centre or any other authorised Government agency-For Actual Users
11	Process description including process flow sheet indicating equipment details, inputs and outputs (input wastes, chemicals, products, by-products, waste generated, emissions, waste water, etc.)- For Actual Users
12	Compliance report on the CPCB guidelines for setting up the Actual user facility- For Actual Users

3 Fees

Not applicable for this service.

<This space has been intentionally left blank>