



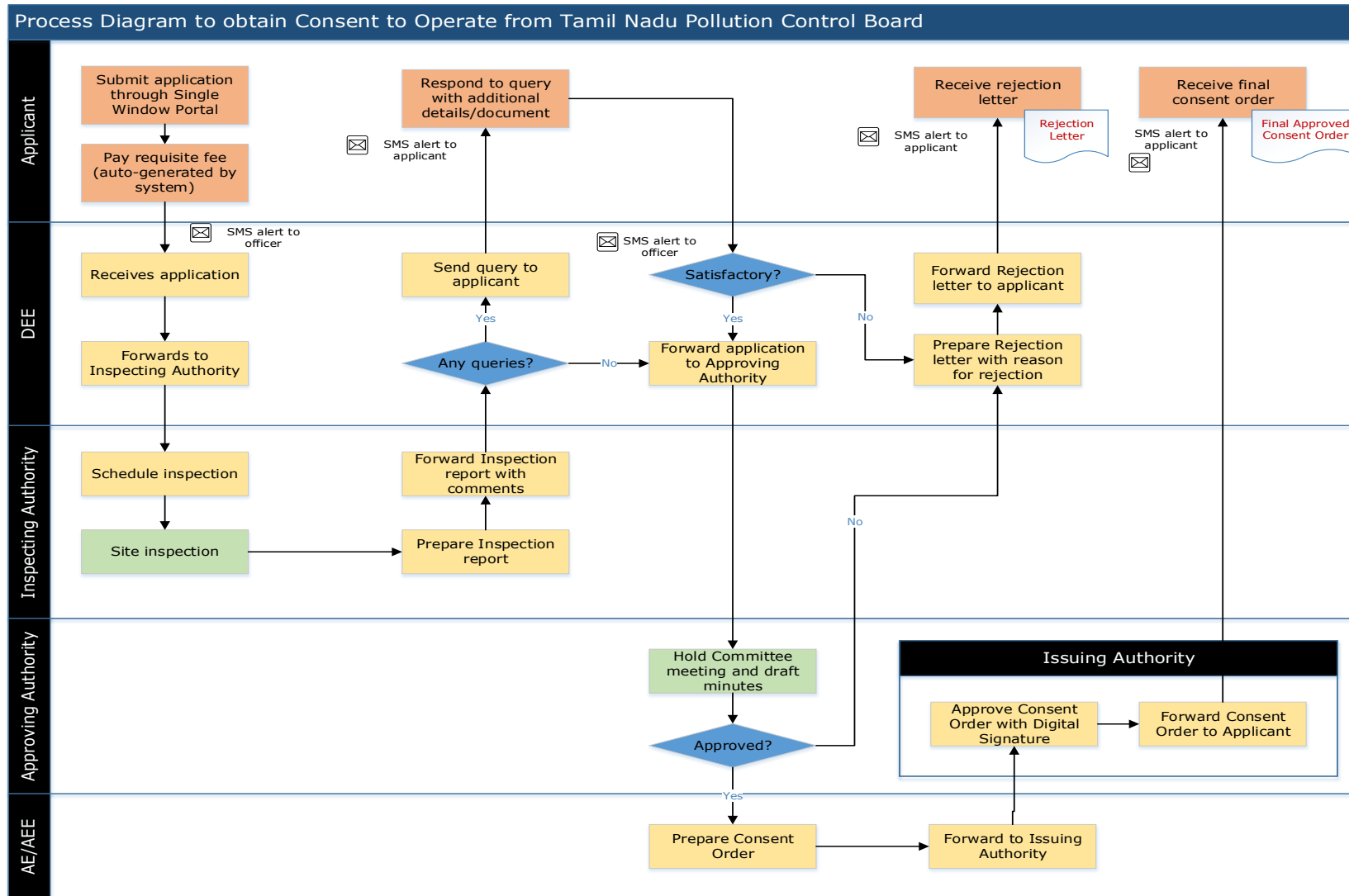
# **Renewal of Consent to Operate (CTO) from Tamil Nadu Pollution Control Board (TNPCB)**

Procedure, List of Supporting Documents and Fees

## **Table of Contents**

1 Procedure .....	3
2 Checklist of supporting documents .....	5
3 Fees.....	5

# 1 Procedure



### Inspection Authority

SI No	Type of Application	17-Category	Red - Large	Red - Medium	Red - Small	Orange - Large	Orange - Medium	Green - Large	Orange Small – and all Green
1	Consent to Establish	Sector JCEE	DEE	AE/AEE	AE/AEE	AE/AEE	AE/AEE	AE/AEE	AE/AEE

### Approving Authority

SI No	Type of Application	17-Category	Red - Large	Red - Medium	Red - Small	Orange - Large	Orange - Medium	Green - Large	Orange Small – and all Green
1	Consent to Establish	TSC	CCC	CCC	ZLCCC	ZLCCC	ZLCCC	ZLCCC	DLCCC

### Issuing Authority

SI No	Type of Application	17-Category	Red - Large	Red - Medium	Red - Small	Orange - Large	Orange - Medium	Green - Large	Orange Small – and all Green
1	Consent to Establish	JCEE	JCEE	JCEE	DEE	DEE	DEE	DEE	DEE

TSC: Technical Sub-Committee

CCC: Consent Clearance Committee

ZLCCC: Zone Level Consent Clearance Committee

DLCCC: District Level Consent Clearance Committee

JCEE: Joint Chief Environmental Engineer

DEE: District Environmental Engineer

## 2 Checklist of supporting documents

#	Item
1	A covering requisition letter stating the project status of the industry and activities clearly.
2	Details of production capacity, actual products manufactured in month wise during the previous financial year.
3	Details of changes if any in the quantity of sewage/trade effluent generated and mode of disposal of the same indicated against in the original consent order (If applicable).
4	Details of changes if any in the quantity of emission and number and height of chimney/stacks indicated against in the original consent order (If applicable).
5	Details of changes if any in the name or in the management of the company (If applicable).
6	A consolidated report of analysis of the treated sewage/ trade effluent samples collected by TNPCB Officials during the previous financial year (If applicable).
7	Latest reports of AAQ, Stack Monitoring and Noise Level Survey conducted through TNPCB lab during the previous financial year (If applicable).
8	Compliance report on the conditions of latest Hazardous waste Authorisation/Biomedical Waste Authorisation issued to the unit (If applicable).
9	Compliance report on the latest consent/renewal of consent order conditions stipulated under Water & Air Acts issued to the unit.
10	The latest Audited Balance Sheet/Auditor certificate showing the Gross Fixed Assets (GFA) without depreciation of the unit in the prescribed format. Audited balance sheet is compulsory for all large and medium scale Industries
12	Copy of Latest Environmental Statement (If Applicable).

## 3 Fees

S.No	Gross Fixed Assets (based on the details given in 1.12 of application form)	Amount of Consent Fee (Rupees)		
		Red Category	Orange Category	Green Category
1.	Up to Rs. 1 Lakhs	400	300	200
2.	Above Rs. 1 Lakhs and up to Rs. 2. Lakhs	700	600	400
3.	Above Rs. 2 Lakhs and up to Rs. 3 Lakhs	900	700	600
4.	Above Rs. 3 Lakhs and up to Rs. 4 Lakhs	1100	1000	800
5.	Above Rs. 4 Lakhs and up to Rs. 5 Lakhs	1300	1100	1000
6.	Above Rs. 5 Lakhs and up to Rs. 6 Lakhs	1700	1500	1200
7.	Above Rs. 6 Lakhs and up to Rs. 7 Lakhs	2000	1700	1400
8.	Above Rs. 7 Lakhs and up to Rs. 8 Lakhs	2200	2000	1600
9.	Above Rs. 8 Lakhs and up to Rs.9 Lakhs	2400	2100	1800
10.	Above Rs. 9 Lakhs and up to Rs. 10 Lakhs	2600	2400	2000
11.	Above Rs. 10 Lakhs and up to Rs. 15 Lakhs	3700	3100	2500
12.	Above Rs. 15 Lakhs and up to Rs.20 Lakhs	4400	3600	3000
13.	Above Rs. 20 Lakhs and up to Rs.25 Lakhs	5000	4200	3500

S.No	Gross Fixed Assets (based on the details given in 1.12 of application form)	Amount of Consent Fee (Rupees)		
		Red Category	Orange Category	Green Category
14.	Above Rs. 25 Lakhs and up to Rs.35 Lakhs	6000	4900	4100
15.	Above Rs. 35 Lakhs and up to Rs.45 Lakhs	7400	5600	5100
16.	Above Rs. 45 Lakhs and up to Rs.55 Lakhs	8900	7400	6100
17.	Above Rs. 55 Lakhs and up to Rs.65 Lakhs	10400	8400	7100
18.	Above Rs. 65 Lakhs and up to Rs.75 Lakhs	13100	10500	8100
19.	Above Rs. 75 Lakhs and up to Rs. 1 Crore	16300	12600	10100
20.	Above Rs. 1 Crore and upto Rs. 5 Crores	21800	17900	14200
21.	Above Rs. 5 Crores and upto Rs. 10 Crores	Rs.105/- Per Lakh	Rs.65/- Per Lakh	Rs. 42/- Per Lakh
22.	Above Rs. 10 Crores and upto Rs. 50 Crores	Rs.105000/ - +Rs.40/- Per Lakh	Rs.65000/ - +Rs.30/- Per Lakh	Rs.42000 /- +Rs.12/- Per Lakh
23.	Above Rs. 50 Crores and upto Rs. 100 Crores	Rs.265000/ - +Rs. 23/- Per Lakh	Rs.185000 /- +Rs.15/- Per Lakh	Rs. 90000/- +Rs.12/- Per Lakh
24.	Above Rs. 100 Crores and upto Rs. 1000 Crores	Rs.380000/ - +Rs.5/-Per Lakh	Rs.260000 /- +Rs.4/-Per Lakh	Rs.15000 0/- +Rs.3.00 Per Lakh
25.	Above Rs. 1000 Crore	Rs.830000/ - +Rs. 3/- Per Lakh (Max Rs. 31 Lakhs)	Rs.620000 /- +Rs. 2/- Per Lakh (Max Rs.23 Lakhs)	Rs.42000 0/- +Rs.1/- Per Lakh (Max Rs. 8 Lakhs)

<This space has been intentionally left blank>