



Renewal of Boiler Registration under the Boilers Act, 1923 with Directorate of Boilers, Tamil Nadu

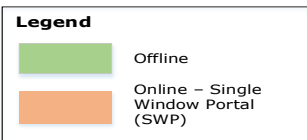
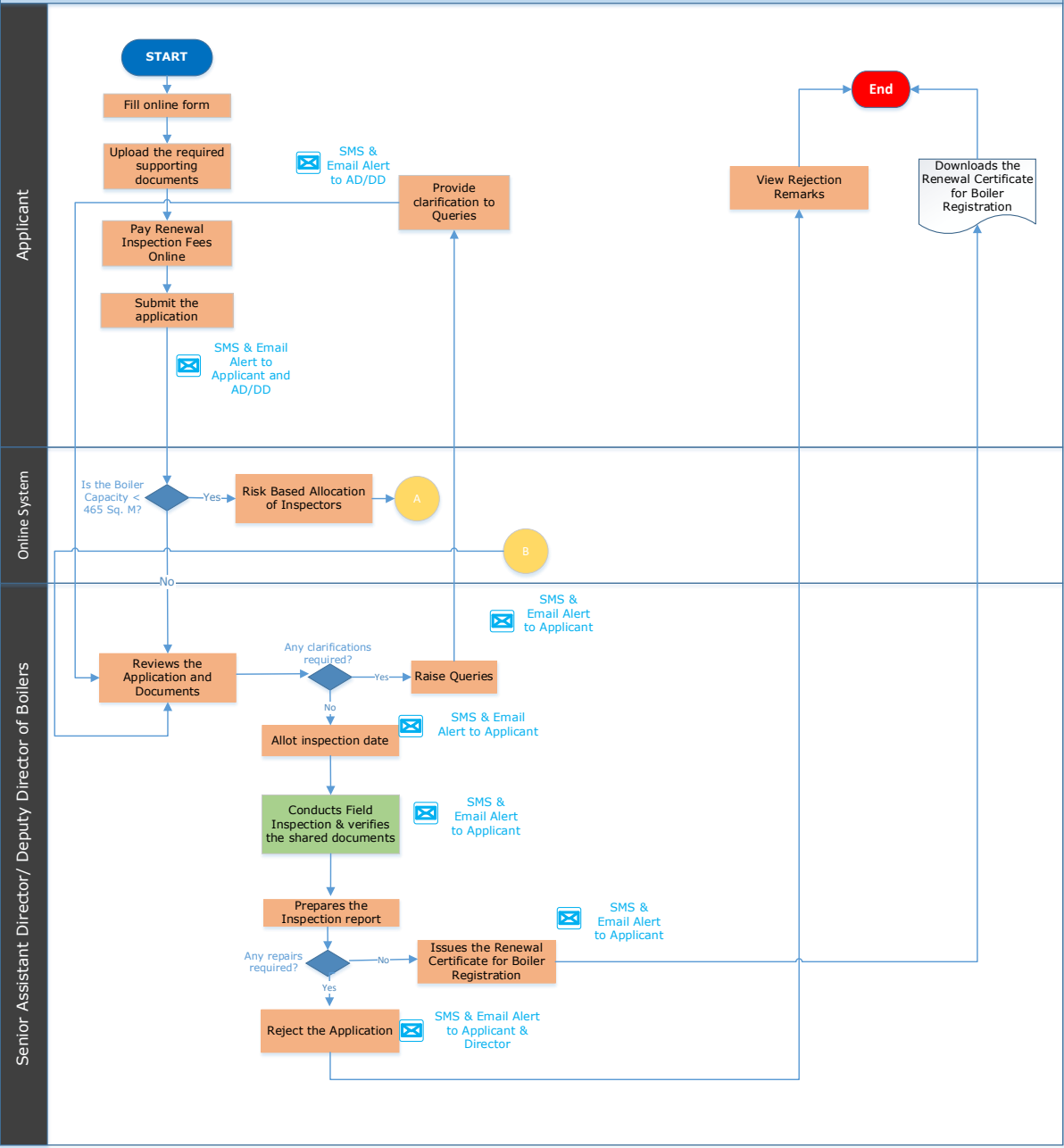
Procedure, List of Supporting Documents and Fees

Table of Contents

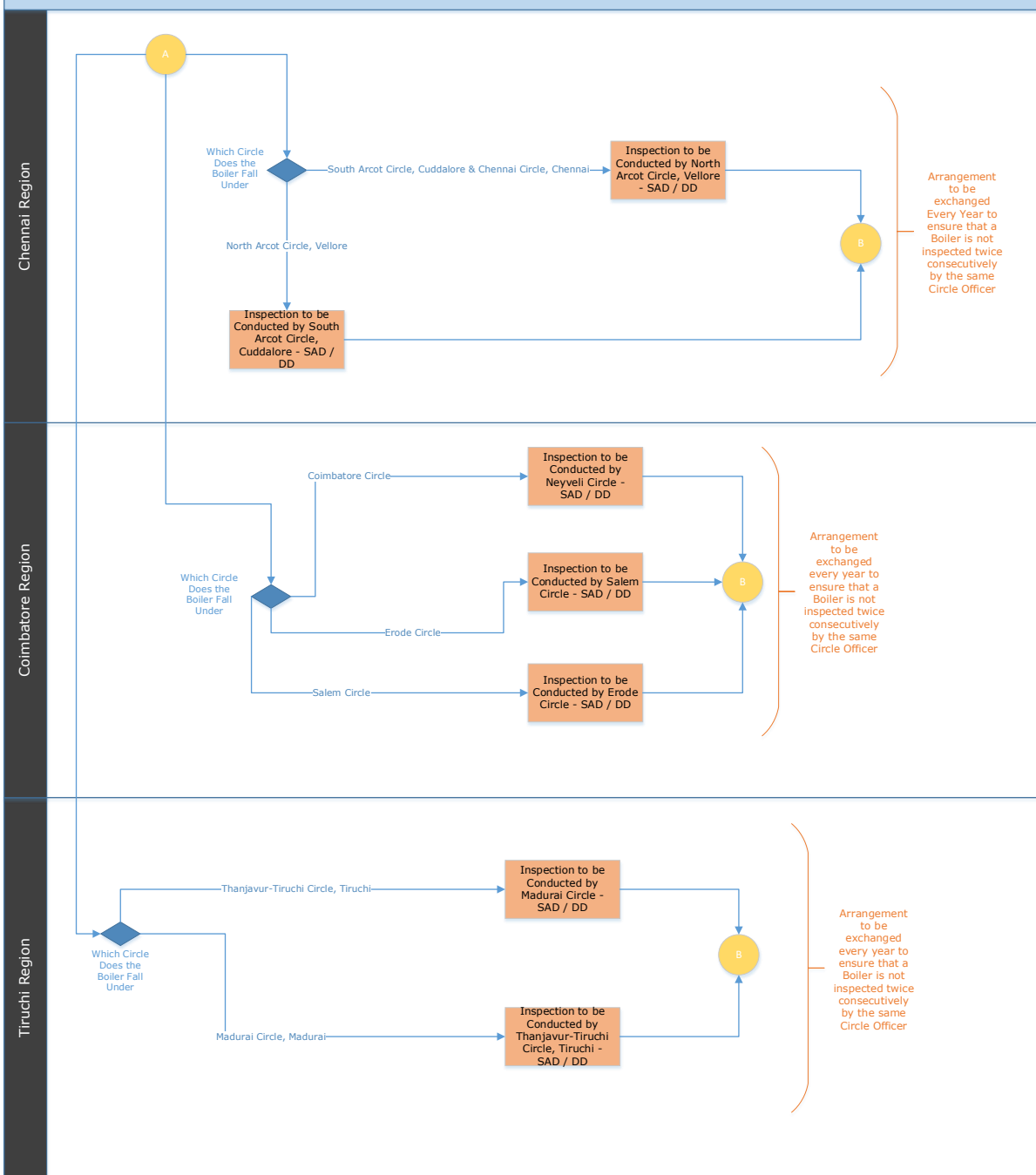
1 Procedure	3
2 Checklist of Supporting Documents	5
3 Fees.....	6

1 Procedure

Procedure for Renewal of Boiler Registration, Directorate of Boilers



Renewal of Boiler Registration: Risk Based Allocation of Inspectors



Legend

- Offline
- Online – Single Window Portal (SWP)

2 Checklist of Supporting Documents

S. No.	Document
1.	Previous Boiler Registration Certificate

<This space has been intentionally left blank>

3 Fees

#	Fee Details	
1	Inspection fee for renewal of Certificate	
	S. No.	Fees in INR
	1	For Small Industrial Boiler as per Chapter XIV (irrespective of rating) (Field 1.5)
	2	For Boiler Rating not exceeding 10 sq. meters
	3	For Boiler Rating exceeding 10 sq. meters but not exceeding 30 sq. meters
	4	For Boiler Rating exceeding 30 sq. meters but not exceeding 50 sq. meters
	5	For Boiler Rating exceeding 50 sq. meters but not exceeding 70 sq. meters
	6	For Boiler Rating exceeding 70 sq. meters but not exceeding 90 sq. meters
	7	For Boiler Rating exceeding 90 sq. meters but not exceeding 110 sq. meters
	8	For Boiler Rating exceeding 110 sq. meters but not exceeding 200 sq. meters
	9	For Boiler Rating exceeding 200 sq. meters but not exceeding 400 sq. meters
	10	For Boiler Rating exceeding 400 sq. meters but not exceeding 600 sq. meters
	11	For Boiler Rating exceeding 600 sq. meters but not exceeding 800 sq. meters
	12	For Boiler Rating exceeding 800 sq. meters but not exceeding 1000 sq. meters
	13	For Boiler Rating exceeding 1000 sq. meters but not exceeding 1200 sq. meters
	14	For Boiler Rating exceeding 1200 sq. meters but not exceeding 1400 sq. meters
	15	For Boiler Rating exceeding 1400 sq. meters but not exceeding 1600 sq. meters
	16	For Boiler Rating exceeding 1600 sq. meters but not exceeding 1800 sq. meters
	17	For Boiler Rating exceeding 1800 sq. meters but not exceeding 2000 sq. meters
	18	For Boiler Rating exceeding 2000 sq. meters but not exceeding 2200 sq. meters
	19	For Boiler Rating exceeding 2200 sq. meters but not exceeding 2400 sq. meters
	20	For Boiler Rating exceeding 2400 sq. meters but not exceeding 2600 sq. meters
	21	For Boiler Rating exceeding 2600 sq. meters but not exceeding 2800 sq. meters
	22	For Boiler Rating exceeding 2800 sq. meters but not exceeding 3000 sq. meters
	"Above 3000 sq. meters, for every 200 sq. meters or part thereof an additional fee of Rs. 500 shall be charged"	
	Example: A boiler with 112 Rating will be charged an Inspection Fee of Rs.4500. Small Industrial Boiler type boilers will be charged a flat Inspection Fees of Rs.1000 irrespective of its Rating as given in the Table.	
	Higher Capacity Boilers	

#	Fee Details
	<ol style="list-style-type: none">1. If the Rating exceeds 3000 square metre, then compute the Fee in the following method. Deduct 3000 from the Rating. Divide the balance by 200. Find the quotient and the remainder. Now the Inspection Fee = $19500 + \text{Quotient} * 500$ if the remainder is not zero, and the Fee = $19000 + \text{Quotient} * 500$ if the remainder is zero.2. Suppose the Rating is 8750 square metre. Quotient for $(8750 - 3000) / 200$ is 28. Remainder is non-zero. Therefore, Fee = $19500 + 28 * 500 = 33500$. So, Inspection Fee for the boiler is Rs.33,500.3. Suppose the Rating is 34,200 square metre. Quotient for $(34200 - 3000) / 200$ is 156. Remainder is zero. Therefore, Fee = $19000 + 156 * 500 = 97000$. So, Inspection Fee for the boiler is Rs.97,000.

<This space has been intentionally left blank>