



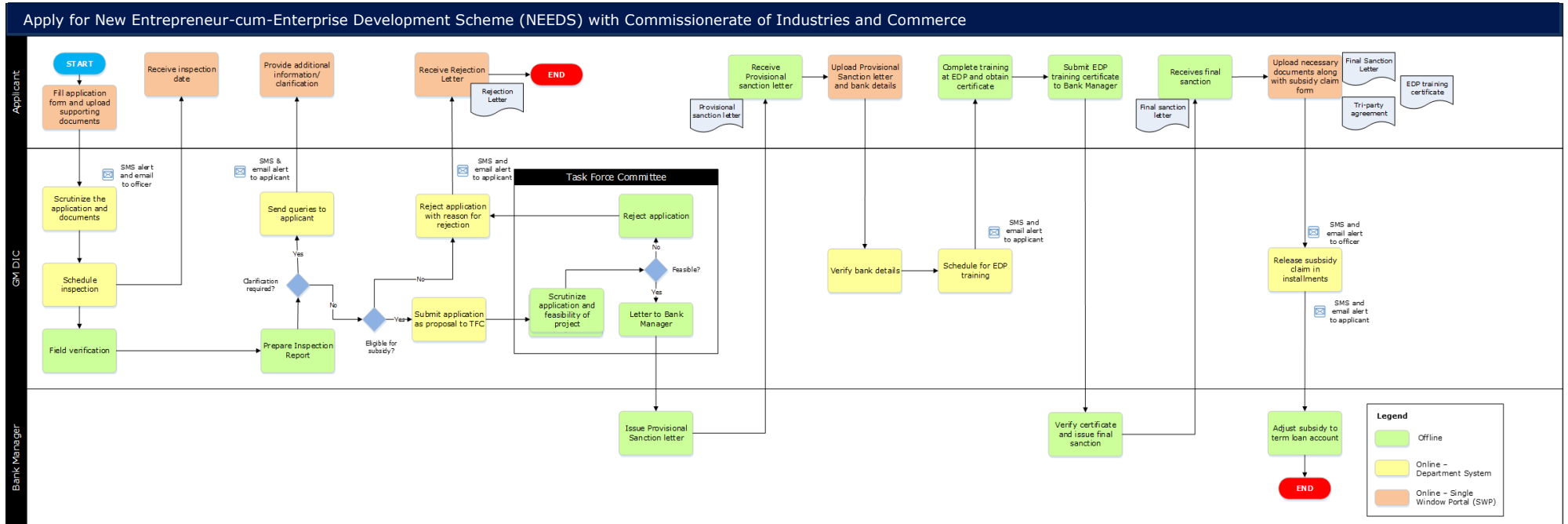
Apply for New Entrepreneur-cum-Enterprise Development Scheme (NEEDS) with Commissionerate of Industries and Commerce

Procedure, List of Supporting Documents, and Fees

Table of Contents

1 PROCEDURE	1
2 CHECKLIST OF SUPPORTING DOCUMENTS	2
3 FEES.....	2

1 Procedure



<This space has been intentionally left blank>

2 Checklist of supporting documents

S. No.	Document	Mandatory
1	Proof of age-Transfer certificate/ Record Sheet issued by School/College (for all partners)	Yes
2	Proof of Age - Copy of Ration Card or Residence certificate obtained from the Thasildhar (for all partners)	Yes
3	Copy of Degree / Diploma / ITI certificate (for all partners)	Yes
4	Community Certificate (Not Applicable for General Male/Female/General)	No
5	Ex-Service man /Differently abled /Transgender with valid certificate (If Applicable)	No
6	Rental / Lease Agreement / Ownership document	Yes
7	Quotations for machinery / Equipment	Yes
8	Copy of partnership deed in case of partnership concern	No
9	Project Report	Yes
10	Building Plan	Yes
11	Estimate of building obtained from a chartered civil engineer	Yes
12	Land Document (Encumbrance Certificate)	Yes
13	Land sale agreement	Yes

3 Fees

No fee charged.

<This space has been intentionally left blank>