



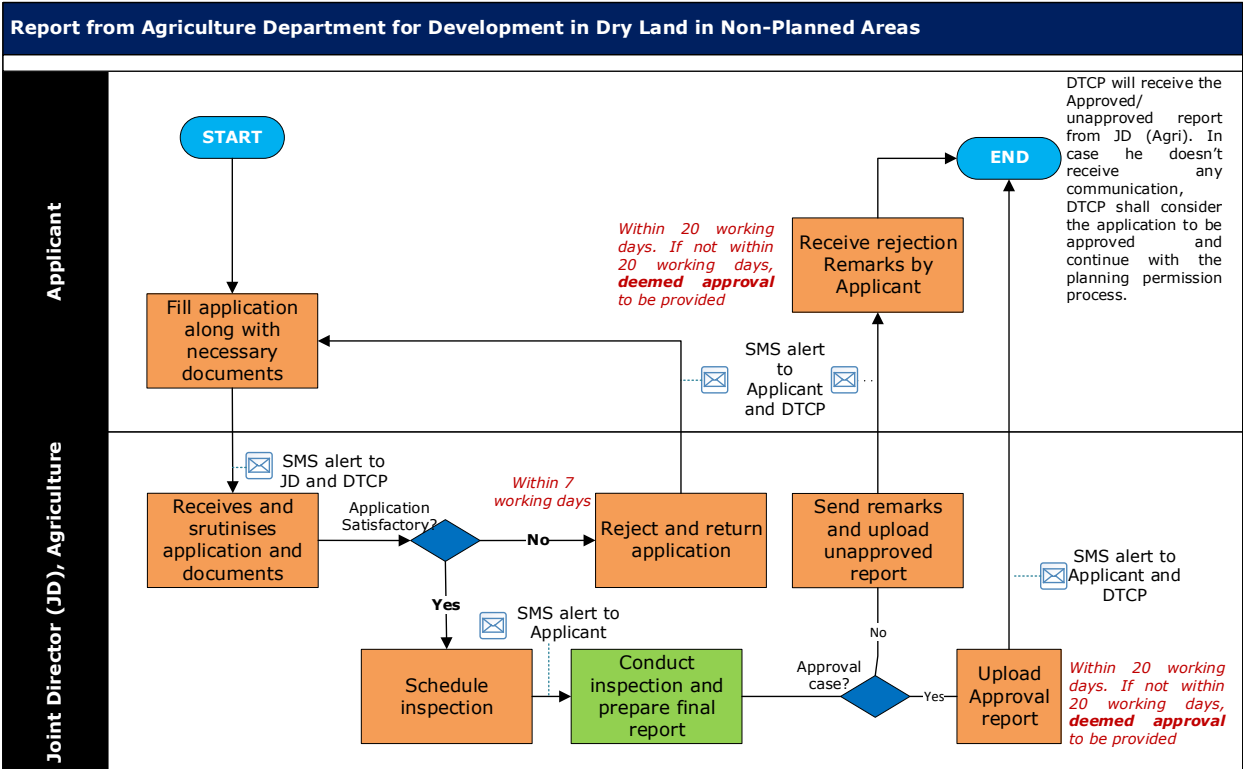
Report from Agriculture Department for development in dry land in non- planned areas

Procedure, List of Supporting Documents and Fees

Table of Contents

1 Procedure	3
2 Checklist of supporting documents	4
3 Fees.....	5

1 Procedure



<This space has been intentionally left blank>

2 Checklist of supporting documents

S. No.	Document
1.	Adangal certificate from VAO for recent past 3 fasali including current fasali
2.	Copy of existing conversion certificate (If any part of the land already converted)
3.	Patta / Chitta Document
4.	Layout drawing
5.	Aadhar Card of the owner
6.	Field Measurement Book (FMB) sketch
7.	Encumbrance Certificate (have the details of the last 13 years and should have been obtained within 30 days. More than 30 day old document will not be valid)
8.	A- Registrar

<This space has been intentionally left blank>

3 Fees

Not Applicable for this service.

<This space has been intentionally left blank>