



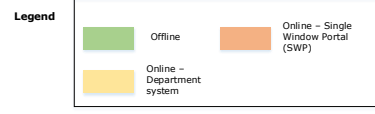
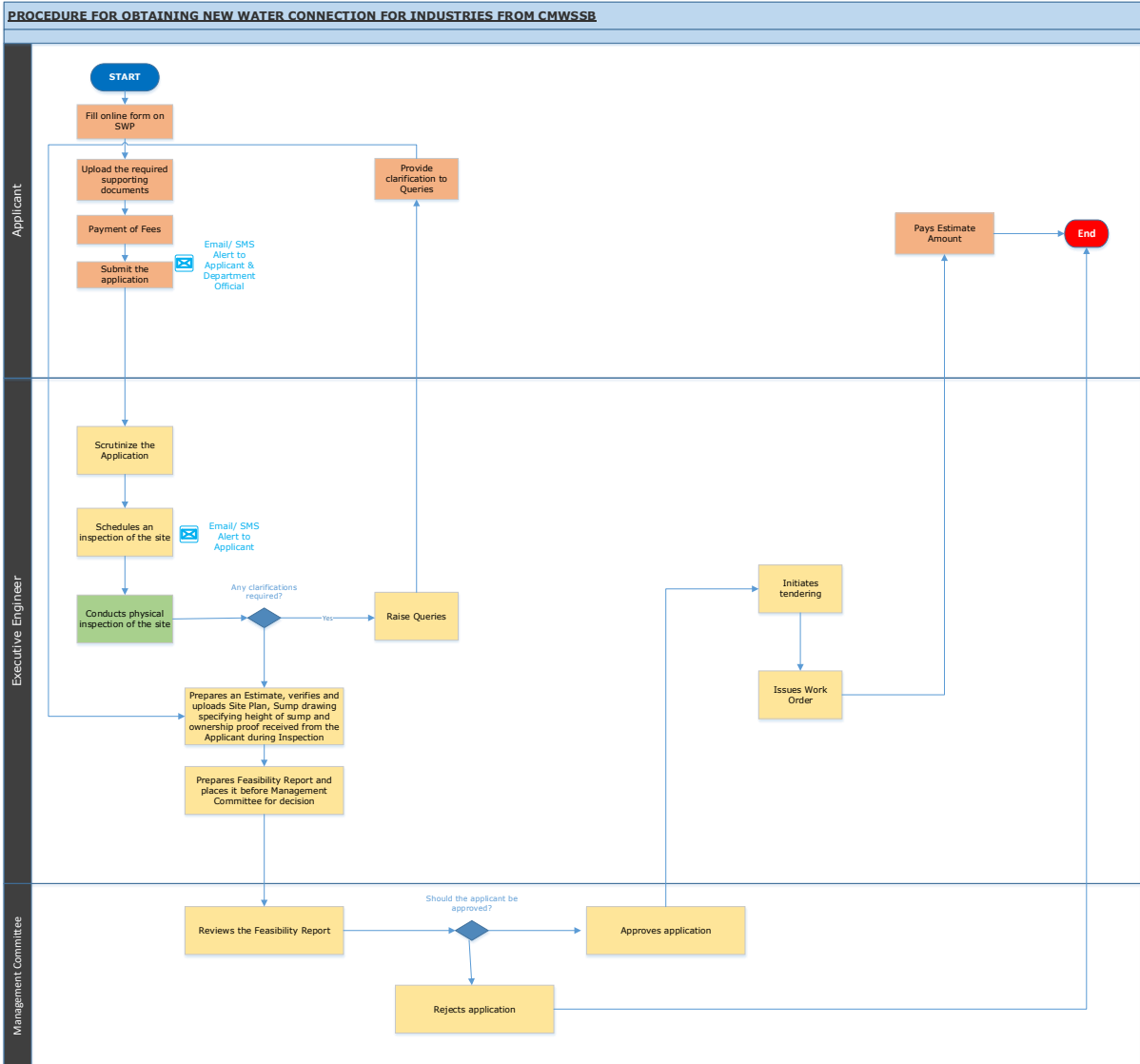
Water Connection for Industries from Chennai Metropolitan Water Supply and Sewerage Board (CMWSSB)

Procedure, List of Supporting Documents and Fees

Table of Contents

1 Procedure	3
2 Checklist of Supporting Documents	4
3 Fees.....	5

1 Procedure



2 Checklist of Supporting Documents

#	Document
1	Site plan
2	Sump drawing specifying height of sump
3	Ownership details (lease deed/ rent agreement/ sale deed/ etc.)

<This space has been intentionally left blank>

3 Fees

S. No.	Processing Fee Details	Rate (in INR)
1	Application Fee (excluding GST@18%):	
	a) Water requirement of < 1000 Kilo Liters Per Day (KLD)	1,00,000
	b) Water Requirement of 1000-1500 KLD	1,50,000
	c) Water Requirement of >1500 KLD	2,50,000

*GST @ 18%: 9% CGST + 9% SGST

<This space has been intentionally left blank>