



Water and Sewer Connection for Commercial Establishment (For G+2 and below): Single Assessment from Chennai Metropolitan Water Supply and Sewerage Board (CMWSSB)

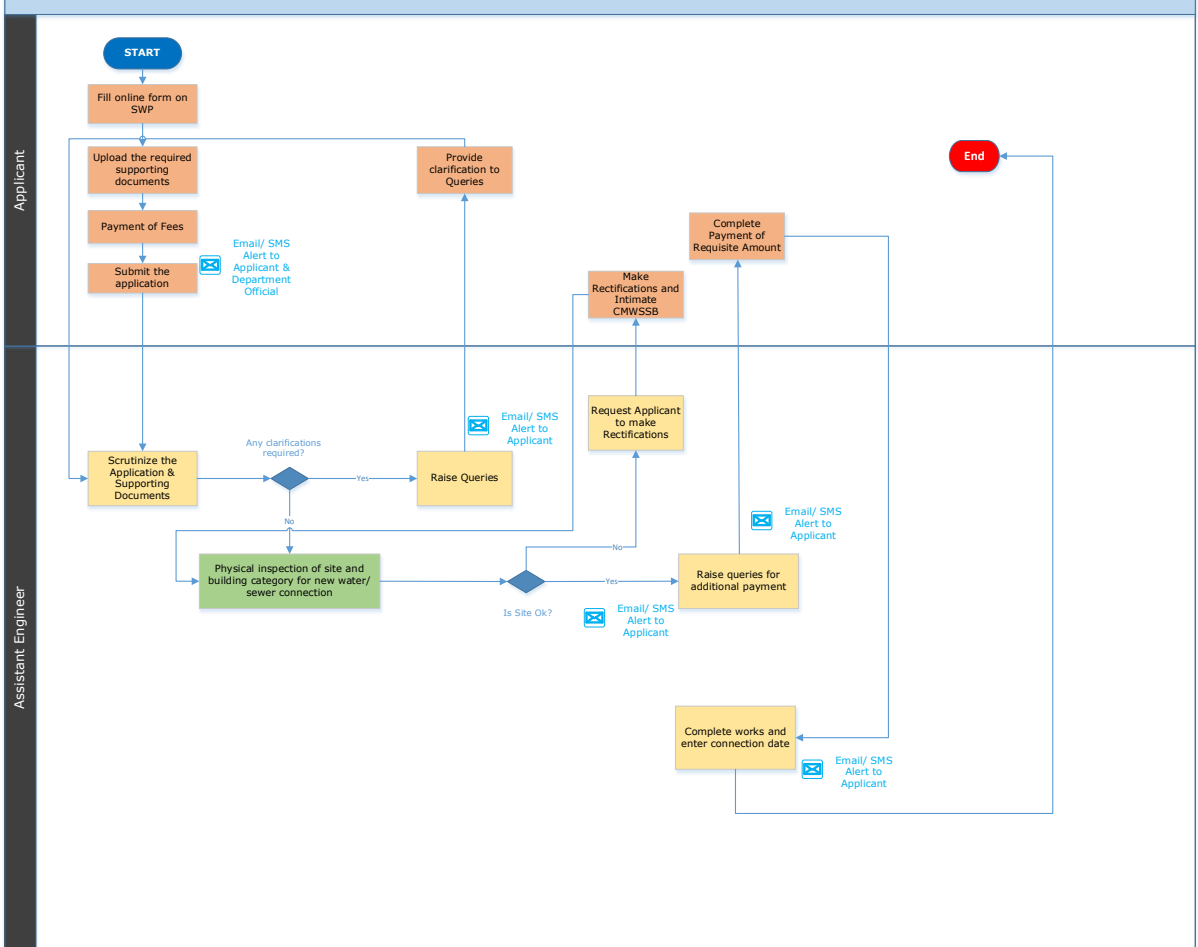
Procedure, List of Supporting Documents and Fees

Table of Contents

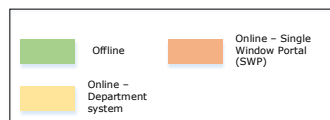
1	Procedure.....	1
2	Checklist of supporting documents.....	2
3	Fees	3

1 Procedure

PROCEDURE FOR OBTAINING WATER & SEWER CONNECTION FOR COMMERCIAL ESTABLISHMENT (FOR G+2 AND BELOW): SINGLE ASSESSMENT FROM CMWSSB



Legend



<This space has been intentionally left blank>

2 Checklist of supporting documents

No documents are required at the time of application submission

<This space has been intentionally left blank>

3 Fees

S. No.	Processing Fee Details	Rate (in INR)
1	Connection Charge for water & sewer:	
	Category A (for every 100 sq m)	7,500
	Category B (for every 50 sq m)	7,500
	Category C (for every 25 sq m)	7,500

- **Category A:** Offices, Hospitals without inpatient facilities, Educational Institutions without Boarding and Lodging, Temples, Churches, Mosques, guest houses, shopping / commercial complexes, Cinema Theatres, Factories with or without toilets, consulting room of all kinds and similar type of buildings, every 100 sq.m of built up area or part thereof, is calculated as one dwelling unit.
- **Category B:** Hotels, Restaurant, Educational Institutions with Hostels, Lodging Houses, Marriage Hall, Hospitals with Lab & Diagnostic facilities only and without inpatient facility and any other buildings of similar natures, every 50 sq.m of built up area or part thereof is calculated as one dwelling unit.
- **Category C:** Hospital with inpatient facilities, every 25 sq.m. of built up area or part thereof is calculated as one dwelling unit.

<This space has been intentionally left blank>