



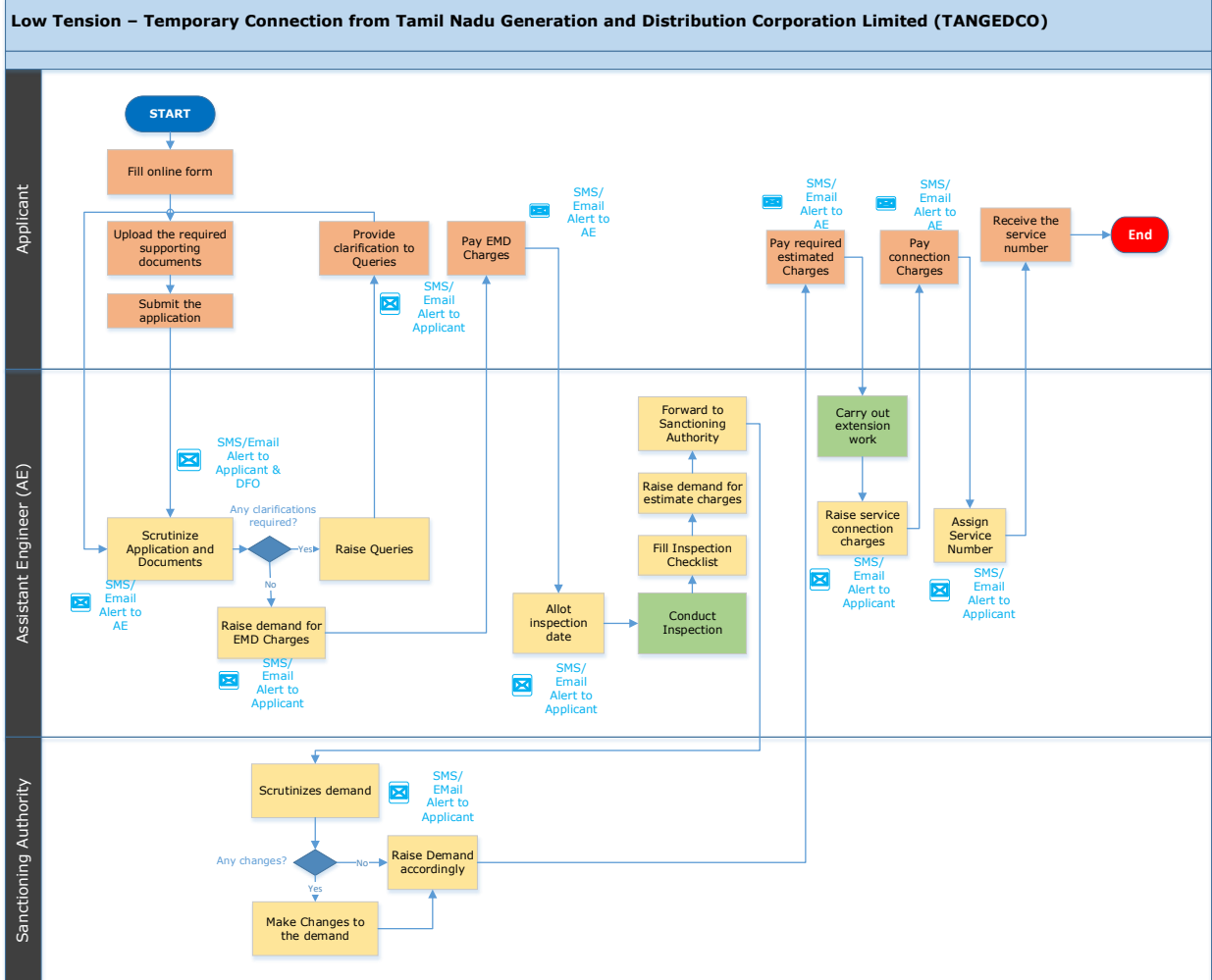
Low Tension - Temporary Connection from Tamil Nadu Generation and Distribution Corporation Limited

Procedure, List of Supporting Documents, and Fees

Table of Contents

1 Procedure	1
2 Checklist of supporting documents	2
3 Fees.....	3

1 Procedure



<This space has been intentionally left blank>

2 Checklist of supporting documents

S. No.	Document
1	Proof of ownership such as sale deed/ partition deed/ gift settlement executed in favour of the applicant/ certified copy of court judgement/ Recent property tax receipt for the premises in name of applicant/ computer patta / allotment letter/ ownership certificate issued by revenue department officials
2	In case of joint property Copies of proof of ownership such as legal heir certificate along with parent documents specified in (1) above and consent letters from co-owners. If consent letter is not produced, an indemnity bond with enhanced security deposit.
3	If the applicant is not the owner, consent letter from owner in Form 5 or valid proof of occupancy and indemnity bond in Form 6.
4	For all special/multi-storeyed buildings in Chennai Metropolitan area, Planning Permission for special Multi Storeyed Buildings
5	For all special/multi-storeyed buildings in Chennai Metropolitan area, Completion Certificate or an Undertaking to Furnish Completion Certificate later

<This space has been intentionally left blank>

3 Fees

ONE PAGE STATEMENT ON TARIFF RATES AS IN THE TNERC ORDER NO :T.P.No.1 of 2017 DT:11.08.2017						
Revised Tariff rates with effect from 11.08.2017 Approved rate and payable by the Consumer (Category of Consumers * Fully / # Partly subsidised by the Government)						
I - High Tension supply						
Tariff	Category of Consumers	TARIFF FIXED BY TNERC		TARIFF PAYABLE BY THE CONSUMER		
		Energy Charges (Rs/unit)	Demand Charges (Rs/kVA/month)	Energy Charges after Govt's subsidy (Rs/unit)	Demand Charges after Govt's subsidy (Rs/kVA/month)	
I-A	Industries, Registered factories, Textiles, Tea estates, IT services, start up power provided to generators etc.,	6.35	350	6.35	350	
I-B	Railway Traction	6.35	300	6.35	300	
II-A	Govt. and Govt. aided Educational Institutions and hostels, Government Hospitals, Public Lighting and Water supply, Actual places of public worship etc.,	6.35	350	6.35	350	
II-B	Private Educational Institutions & Hostels	6.35	350	6.35	350	
III	All other categories of consumers not covered under HT-I-A, I-B, II-A, II-B, IV and V	8.00	350	8.00	350	
*IV	Lift Irrigation societies for Agriculture registered under Co-op Societies or under any other Act.(Fully subsidised by the Govt.)	6.35	0	0	0	
V	HT Temporary Supply for construction and other temporary purposes	11.00	350	11.00	350	
II - Low Tension Supply						
Tariff	Category of Consumers & slabs	Energy Charges (Rs/unit)	Fixed Charges for two months (Rs)	Energy Charges after Govt's subsidy (Rs/unit)	Fixed Charges for two months after Govt's subsidy (Rs)	
#1-A	Domestic, Handlooms, Old age homes, Consulting rooms, Nutritious Meals Centres etc.					
	Consumption upto 100 units bi-monthly (100 units free scheme)	0-100 units	2.50	30/service	0	0
	Consumption above 100 units and upto 200 units bi-monthly (100 units free scheme)	0-100 units	2.50	30/service	0	20/service
		101-200 units			1.50	
	Consumption above 200 units and upto 500 units bi-monthly (100 units free scheme)	0-100 units	2.50	40/service	0	30/service
		101-200 units			2.00	
		201 to 500 units	3.00		3.00	
	Consumption above 500 units bi-monthly (100 units free scheme)	0-100 units	2.50		0	
		101-200 units	3.50		3.50	
		201 to 500 units	4.00	50/service	4.00	50/service
	above 500 units	6.00		6.00		
	For Handlooms in residence, 0 to 200 units bi-monthly is free. (Above 200 units bi-monthly, the corresponding slab in the domestic tariff is applicable)					
*1-B	Mits in village panchayats,TAHDCO: Tilt installation of meters (Fully subsidised by the Govt.) On installation of meters (Fully subsidised by the Govt.)	0	290/service	0	0	
I-C	L.T. Bulk supply to residential Colonies of Railway, Defense, Police quarters etc.	4.60	120/service	4.60	120/service	
II-A	Public lighting by Govt./Local bodies, Public water supply, Sewerage etc.,	6.35	120/kW	6.35	120/kW	
II-B(1)	Govt and Govt. aided Educational Institutions, Govt. Hospitals and Research labs, etc	5.75	120/kW	5.75	120/kW	
II-B(2)	Private Educational Institutions & Hostels	7.50	120/kW	7.50	120/kW	
#II-C	Actual Places of Public worship(Bi-monthly)	0-120 units	120/kW	2.85	120/kW	
		Above 120 units	120/kW	5.75	120/kW	
III-A(1)	Cottage and Tiny Industries; Agricultural and allied activities, Sericulture, Floriculture, Horticulture and Fish/Prawn culture etc., (contracted load shall not exceed 12 kW) (Bi-monthly)					
		upto 500 units	4.00		4.00	
		above 500 units	4.60	40/kW	4.60	
#III-A(2)	Power Looms (contracted load shall not exceed 12 kW) incl. Winding etc.(Bi-monthly) (750 units bi-monthly is free)	upto 500 units		0	0	
		501-750 units		0	0	
		751-1000 units	120/kW	2.30		
		1001-1500 units		3.45	70/kW	
		above 1500 units		4.60		
III-B	Industries(Not covered under LT-III-A(1) & III-A(2)), If the connected load of all industries in LT-III-A(1) & III-A(2) connected load exceeds 12 kW, welding sets and IT	6.35		6.35	70/kW	
*IV	Agricultural, sericulture, floriculture, horticulture and fish/prawn culture etc., - Tilt installation of meters (Fully subsidised by the Govt.) On installation of meters (Fully subsidised by the Govt.)	0	Rs.2875/HP/Annum	0	0	
		3.22	0	0	0	
V	Commercial (Not covered under LT-I-A, I-B, I-C, II-A, II-B(1), II-B(2), II-C, III-A(1), III-A(2), III-B, IV and VI) consumption upto 100 units bi-monthly (consumption above 100 units bi-monthly (for all units)	0-100 units	140/kW	5.00	140/kW	
		(for all units)	140/kW	8.05	140/kW	
VI	For temporary activities, construction of buildings and Lavish illumination, additional construction of beyond 2000 square feet in the premises of an existing consumer. Lavish illuminations	12.00	600/kW	12.00	600/kW	

Source - http://www.tangedco.gov.in/linkpdf/ONE_PAGE_STATEMENT.pdf