



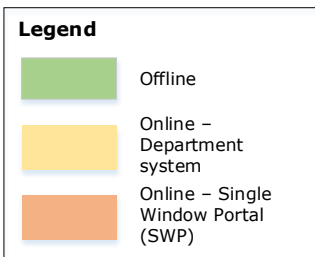
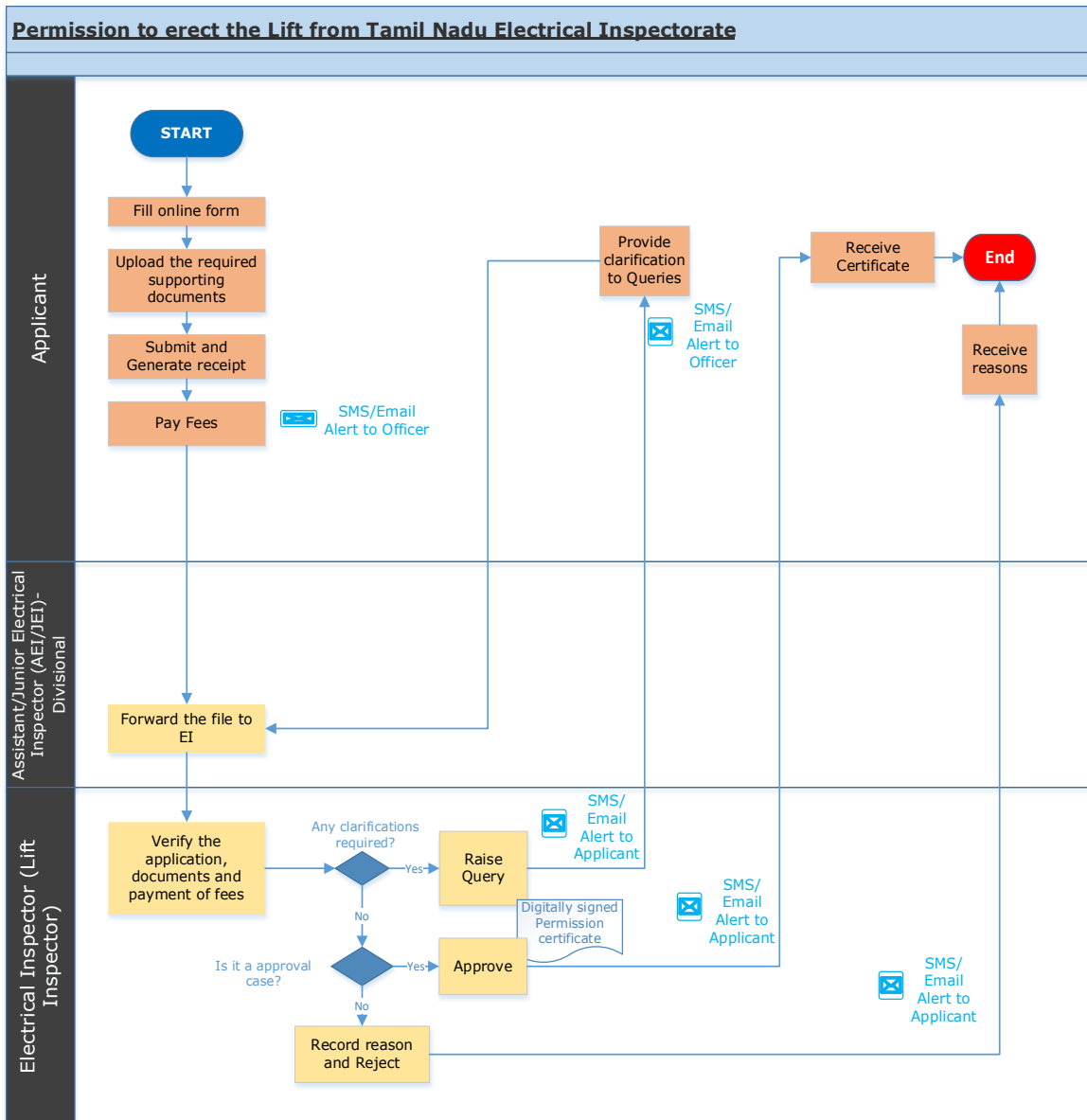
Permission to Erect the Lift from Tamil Nadu Electrical Inspectorate

Procedure, List of Supporting Documents, and Fees

Table of Contents

1 Procedure	1
2 Checklist of supporting documents	2
3 Fees.....	2

1 Procedure



<This space has been intentionally left blank>

2 Checklist of supporting documents

S. No.	Document
1.	One set of drawings duly signed by the Applicant and Authorized Person of Lift Company, showing <ul style="list-style-type: none">• Layout of the lift erection• Plan• Sectional Elevation• Arrangement of Car and Landing Doors of the Lift• Lift well Enclosure• Size and position of the machine relating to the lift well• Position of hoisting machine• Number of floors to be served and total travel• Factor of safety based on the static loads of lift
2.	Electrical wiring diagram of complete electrical installations with all details such as type of wiring, size of cable/wires, rating of controls, motors, other equipment, earthing arrangement, earth lead size, etc., duly signed by the Applicant and licensed Electrical Contractor.
3.	Building Planning Permit and approved Building Plan drawings obtained from urban local body concerned

3 Fees

S. No	Number of Landings	Amount (in INR)
1.	Lift has up to five landings	2,500
2.	Lift has more than five landings	5,000

<This space has been intentionally left blank>