



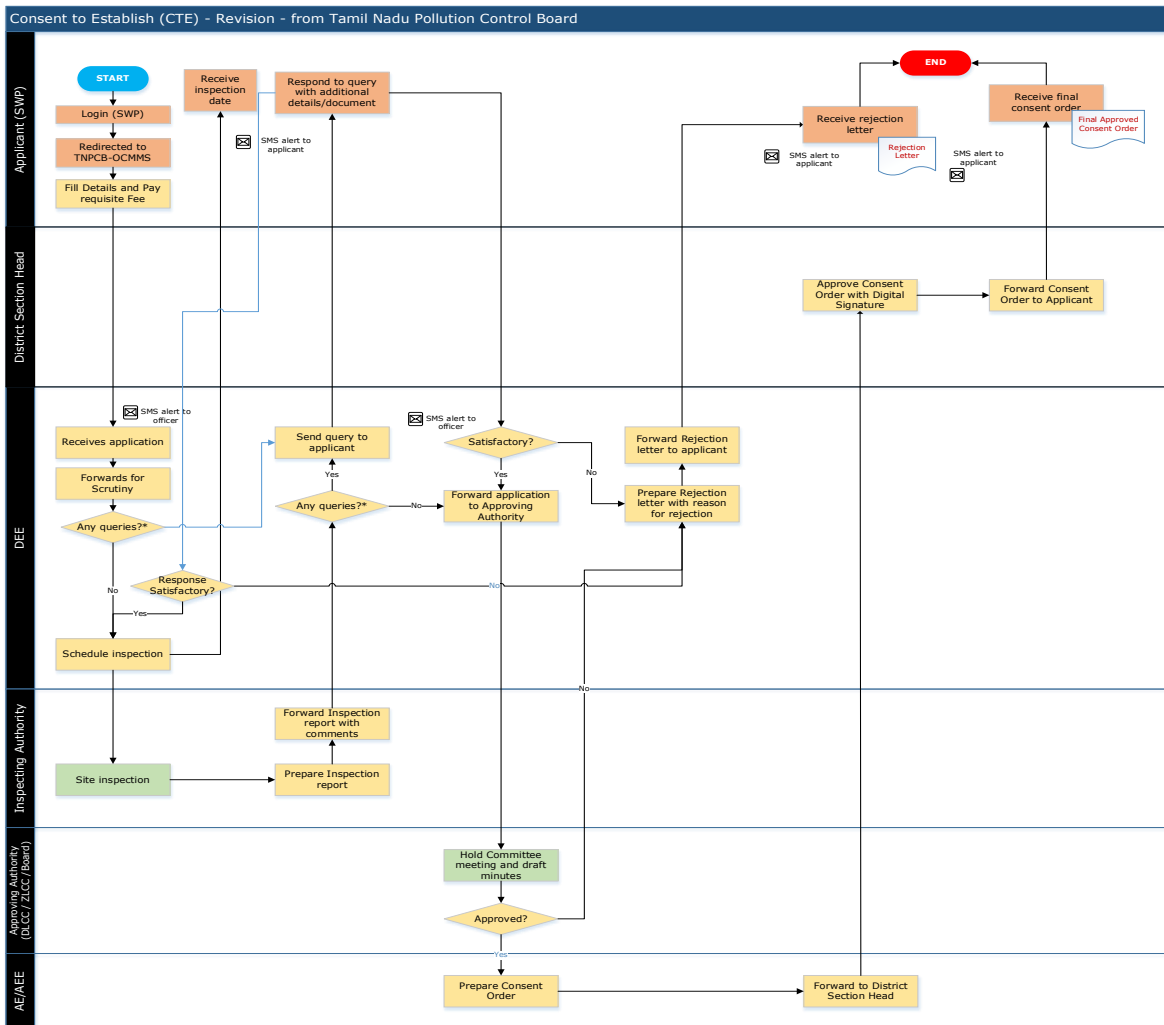
# **Consent to Establish (CTE) - Revision - from Tamil Nadu Pollution Control Board**

Procedure, List of Supporting Documents, and Fees

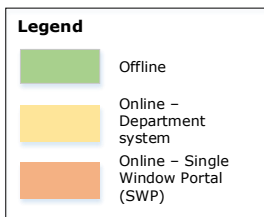
## **Table of Contents**

1 Procedure .....	1
2 Checklist of supporting documents .....	2
3 Fees.....	3

# 1 Procedure



\* The concerned official can return the entire application as well to the applicant for them to edit and send it back



<This space has been intentionally left blank>

## 2 Checklist of supporting documents

S. No.	Document
1.	Covering requisition letter stating the project status of the industry and activities clearly.
2.	Attested sale Deed /Lease Deed or any other relevant documents as proof to ensure possession of the site/factory for which application is made by the applicant
3.	Attested Memorandum and Articles of Association in case of Public/Private sectors or registered partnership deed in case of partnership company
4.	Layout plan showing the location of various process equipment, utilities like boiler, generator etc., effluent treatment plant, outlet location, non-hazardous and hazardous waste storage yard
5.	Topo sketch showing the distance of water bodies, roads, existing/proposed residential areas, agricultural lands, important religious locations, educational institutions, ancient monuments, archaeological places and other sensitive areas for 1 KM. radius from the units
6.	Detailed manufacturing process for each product along with detailed process flow chart
7.	Details of Water Balance and wastewater balance for process
8.	Details of Material balance for each products and process
9.	Land use classification certificate as obtained from CMDA/ DTCP/LPA.
10.	Auditor's Certificate with break up details for the proposed Gross fixed Assets duly certified by a Chartered Accountant in the prescribed format
11.	Ground water clearance obtained from the competent Authority (if applicable)
12.	Sewage Treatment Plant(STP) proposal which must contain details of design characteristics of sewage, treatment methodology, mode of disposal, design criteria for various units, detailed drawing of STP and its layout, diagram showing the hydraulic profile and mode of disposal of treated sewage and its adequacy (if applicable)
13.	Effluent Treatment Plant (ETP) proposal which must contain details including breakup quantity of water requirement with sources, breakup quantity of trade effluent, sources of trade effluent, characteristics of wastewater, treatment methodology, mode of disposal, design criteria for various units, detailed drawing of ETP and its layout, diagram showing the hydraulic profile and mode of disposal of treated effluent and its adequacy (if applicable)
14.	Air pollution control (APC) measures proposal which must contain the details regarding fuels used, sources of emission, characteristics, concentration and quality of pollutant, proposal along with design criteria and drawing for the proposed APC measures, adequacy of APC measures and stack, odour/noise causing operations and its specific odour/noise control measures (if applicable)
15.	In case of hazardous chemicals used as raw materials, the Material Safety Data Sheets (MSDS) should be enclosed for every item. If the quantity of the hazardous chemicals handled is more than the threshold limit, the unit shall furnish any one or combination of the following documents as required under the Manufacture, Storage, and Import of. Hazardous Chemicals (MSIHC) Rules (If applicable): (i) Risk assessment report, (ii) Onsite emergency preparedness plan and (iii)Off site emergency preparedness plan
16.	In case of transport of hazardous chemicals, details of chemicals transported, method of transport and its safety measures (if applicable).
17.	Industries attracting Environment Impact Assessment (EIA) Notification shall submit Environmental Clearance obtained from the Ministry of Environment & Forest (MOEF)/ State Environment Impact Assessment Authority (SEIAA) along with the EIA Report (if applicable)
18.	Coastal Regulation Zone (CRZ) clearance obtained from the competent Authority (if applicable)

### 3 Fees

S.No	Gross Fixed Assets (based on the details given in application form)	Amount of Consent Fee (in INR)		
		Red Category	Orange Category	Green Category
1.	Up to Rs. 1 Lakhs	400	300	200
2.	Above Rs. 1 Lakhs and up to Rs. 2. Lakhs	700	600	400
3.	Above Rs. 2 Lakhs and up to Rs. 3 Lakhs	900	700	600
4.	Above Rs. 3 Lakhs and up to Rs. 4 Lakhs	1100	1000	800
5.	Above Rs. 4 Lakhs and up to Rs. 5 Lakhs	1300	1100	1000
6.	Above Rs. 5 Lakhs and up to Rs. 6 Lakhs	1700	1500	1200
7.	Above Rs. 6 Lakhs and up to Rs. 7 Lakhs	2000	1700	1400
8.	Above Rs. 7 Lakhs and up to Rs. 8 Lakhs	2200	2000	1600
9.	Above Rs. 8 Lakhs and up to Rs.9 Lakhs	2400	2100	1800
10.	Above Rs. 9 Lakhs and up to Rs. 10 Lakhs	2600	2400	2000
11.	Above Rs. 10 Lakhs and up to Rs. 15 Lakhs	3700	3100	2500
12.	Above Rs. 15 Lakhs and up to Rs.20 Lakhs	4400	3600	3000
13.	Above Rs. 20 Lakhs and up to Rs.25 Lakhs	5000	4200	3500
14.	Above Rs. 25 Lakhs and up to Rs.35 Lakhs	6000	4900	4100
15.	Above Rs. 35 Lakhs and up to Rs.45 Lakhs	7400	5600	5100
16.	Above Rs. 45 Lakhs and up to Rs.55 Lakhs	8900	7400	6100
17.	Above Rs. 55 Lakhs and up to Rs.65 Lakhs	10400	8400	7100
18.	Above Rs. 65 Lakhs and up to Rs.75 Lakhs	13100	10500	8100
19.	Above Rs. 75 Lakhs and up to Rs. 1 Crore	16300	12600	10100
20.	Above Rs. 1 Crore and upto Rs. 5 Crores	21800	17900	14200
21.	Above Rs. 5 Crores and upto Rs. 10 Crores	Rs.105/- Per Lakh	Rs.65/- Per Lakh	Rs. 42/-Per Lakh
22.	Above Rs. 10 Crores and upto Rs. 50 Crores	Rs.105000/- +Rs.40/- Per Lakh	Rs.65000/- +Rs.30/- Per Lakh	Rs.42000/- +Rs.12/-Per Lakh
23.	Above Rs. 50 Crores and upto Rs. 100 Crores	Rs.265000/- +Rs. 23/- Per Lakh	Rs.185000/- +Rs.15/- Per Lakh	Rs. 90000/- +Rs.12/-Per Lakh
24.	Above Rs. 100 Crores and upto Rs. 1000 Crores	Rs.380000/- +Rs.5/-Per Lakh	Rs.260000/- +Rs.4/-Per Lakh	Rs.150000/- +Rs.3.00 Per Lakh
25.	Above Rs. 1000 Crore	Rs.830000/-	Rs.620000/-	Rs.420000/-

S.No	Gross Fixed Assets (based on the details given in application form)	Amount of Consent Fee (in INR)		
		Red Category	Orange Category	Green Category
		+Rs. 3/- Per Lakh (Max Rs. 31 Lakhs)	+Rs. 2/- Per Lakh (Max Rs.23 Lakhs)	+Rs.1/ - Per Lakh (Max Rs. 8 Lakhs)

<This space has been intentionally left blank>