



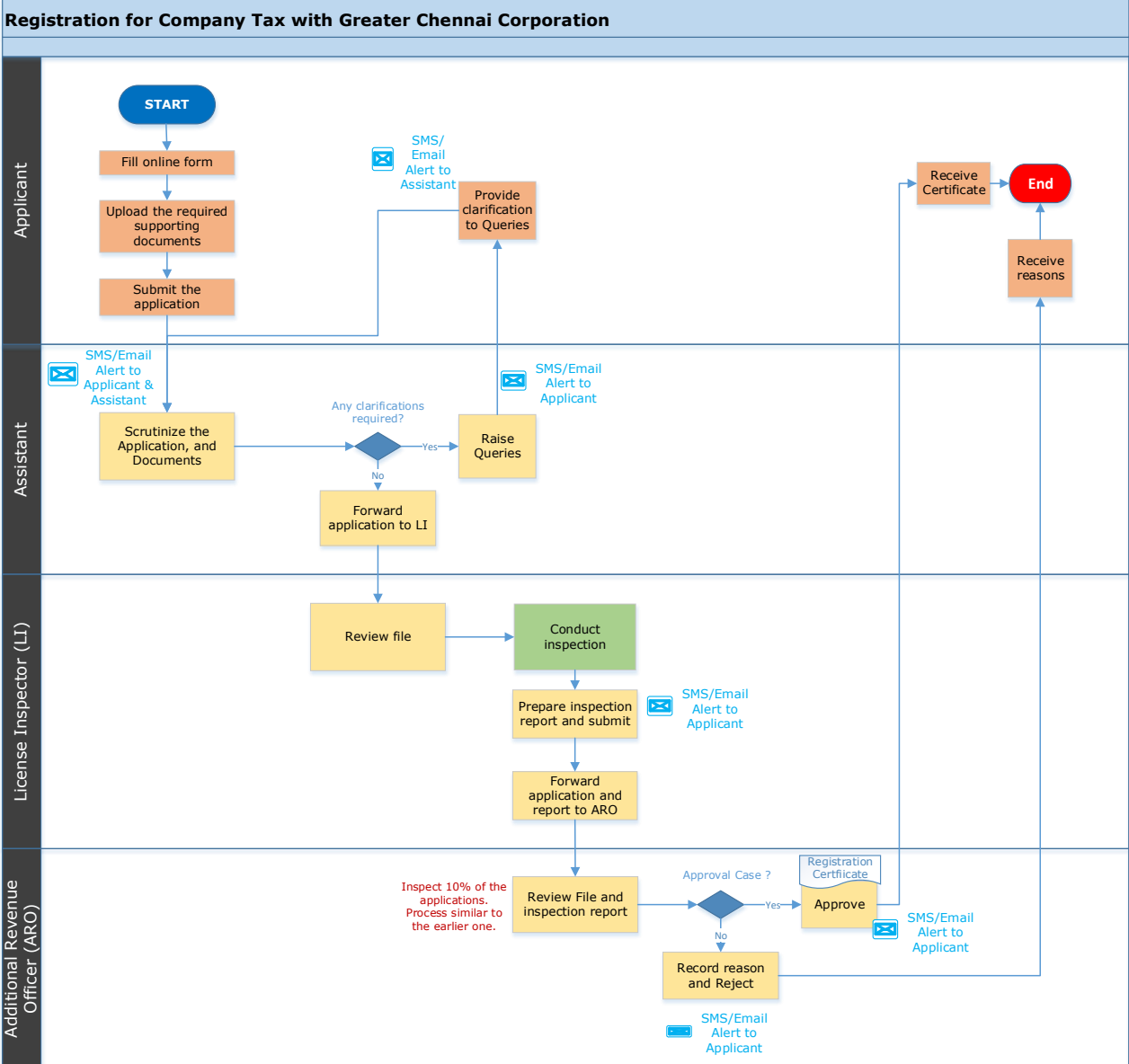
Registration for Company Tax with Greater Chennai Corporation

Procedure, List of Supporting Documents, and Fees

Table of Contents

1 Procedure	1
2 Checklist of supporting documents	2
3 Fees.....	2

1 Procedure



2 Checklist of supporting documents

S. No.	Document
1	Copy of Company Registration Certificate (Certificate of Incorporation)
2	CA Certificate regarding paid up capital

3 Fees

S. No	Paid Up Company Capital	Company tax Rates (per half year) in Rs.
1	< 1 lakh	100
2	1 lakhs and more but < 2 lakhs	200
3	2 lakhs and more but < 3 lakhs	300
4	3 lakhs and more but < 5 lakhs	400
5	5 lakhs and more but < 10 lakhs	500
6	10 lakhs and more but < 20 lakhs	1000
7	20 lakhs and more	1000

<This space has been intentionally left blank>