



Verification and Stamping under Legal Metrology Act, 2009 from Labour Department

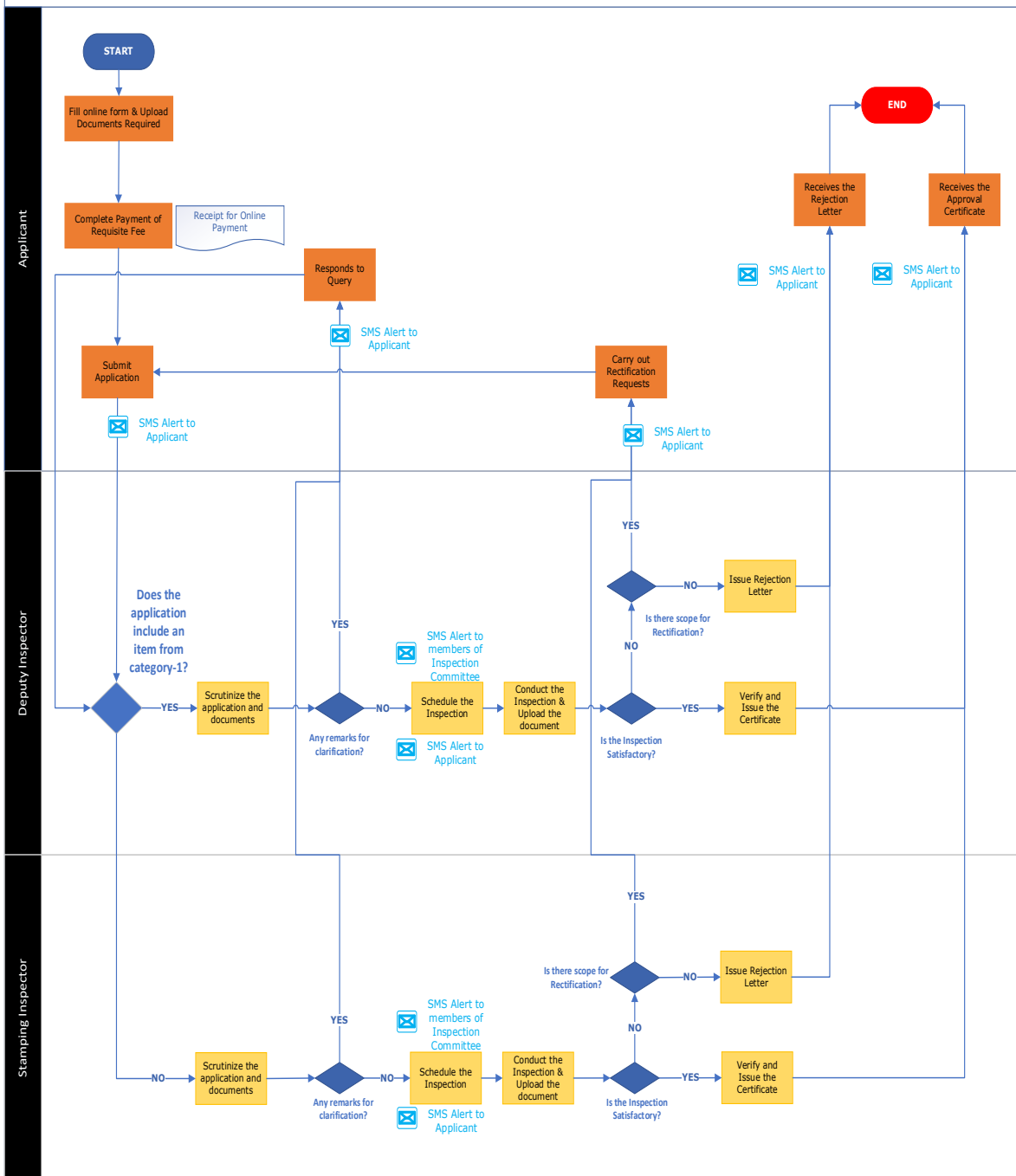
Procedure, List of Supporting Documents, and Fees

Table of Contents

1 Procedure	1
2 Checklist of supporting documents	2
3 Fees.....	3

1 Procedure

Verification and Stamping under Legal Metrology Act 2009 from Labour Department



- CATEGORY 1
DEPUTY INSPECTOR**
- Electronic Weights Above 3 tonnes
 - Petrol, Diesel, Gas
 - Calibration – Tanker Lorries
 - Way Bridge
 - Wagon
 - In motion way bridge
 - Storage Tank

- CATEGORY 2
STAMPING INSPECTOR**
- Electronic Weights Below 3tonnes
 - Peg Measurements
 - Weights
 - Beam Scale
 - Counter Scale

Legend

- Orange rectangle: Online - Single Window Portal (SWP)
- Yellow rectangle: Online - Department System

2 Checklist of supporting documents

S. No.	Document
1	GST Certificate/ PAN Card
2	Previous Licence (<i>if any</i>)
3	Details of Model Approval received from Government of India
4	Model Approval for Manufacturer
5	Manufacturer's Licence
6	Purchase invoice of the weight and measures
7	Dealer's Licence
8	Repairer's Licence
9	Letter of Authorization (in case there is any Managing Agent or Director (s) Appointed for Establishment)

<This space has been intentionally left blank>

3 Fees

Based on Gazette Notification No. 27 dated 3 July 2019 issued by Labour and Employment Department, Government of Tamil Nadu

July 3, 2019]

TAMIL NADU GOVERNMENT GAZETTE

71

"SCHEDULE-IX

[See rules 16]

Fee payable for verification and stamping of Weights and Measures and Weighing and Measuring Instruments.

1. (a) Bullion Weights:

<i>Denomination</i>	<i>Fee per piece</i>
<i>(1)</i>	<i>(Rs.P.)</i>
	<i>(2)</i>
10 kg	60.00
5 kg	40.00
2 kg	40.00
1 kg	40.00
500 g	30.00
200 g	30.00
100 g	30.00
50 g	30.00
20 g	30.00
10 g	30.00
5 g	30.00
2 g	30.00
1 g	30.00

(b) Carat Weights:

<i>Denomination</i>	<i>Fee per piece</i>
<i>(1)</i>	<i>(Rs.P.)</i>
	<i>(2)</i>
100 g (500 c)	40.00
40 g (200 c)	40.00
20 g (100 c)	40.00
10 g (50 c)	40.00
4 g (20 c)	40.00
2 g (10 c)	40.00
1 g (5c)	40.00
400 mg (2 c)	40.00
200 mg (1 c)	40.00
100 g (0.5c)	40.00
40 mg (0.02 c)	40.00
20 mg (0.01 c)	40.00
10 mg (0.05 c)	40.00
4 mg (0.02 c)	40.00
2 mg (0.01 c)	40.00
1 mg (0.005 c)	40.00

(c) Cylindrical knob type weights:

<i>Denomination</i>	<i>Fee per piece</i>
(1)	(Rs.P.)
	(2)
10 kg.	40.00
5 kg.	40.00
2 kg.	30.00
1 kg.	20.00
500 g.	10.00
200 g.	10.00
100 g.	10.00
50 g.	10.00
20 g.	10.00
10 g.	10.00
5 g.	10.00
2 g.	10.00
1 g.	10.00

(d) Sheet Metal Weight: (other than Bullion)

<i>Denomination</i>	<i>Fee per piece</i>
(1)	(Rs.P.)
	(2)
500 mg.	10.00
200 mg.	10.00
100 mg.	10.00
50 mg.	10.00
20 mg.	10.00
10 mg.	10.00
5 mg.	10.00
2 mg.	10.00
1 mg.	10.00

(e) Iron hexagonal, knob type weights and parallelepiped Weights:

<i>Denomination</i>	<i>Fee per piece</i>
(1)	(Rs.P.)
	(2)
50 kg.	50.00
20 kg.	40.00
10 kg.	40.00
5 kg.	40.00
2 kg.	30.00
1 kg.	20.00

<i>Denomination</i>	<i>Fee per piece</i>
<i>(1)</i>	<i>(Rs.P.)</i>
	<i>(2)</i>
500 g.	10.00
200 g.	10.00
100 g.	10.00
50 g.	10.00
20 g.	10.00
10 g.	10.00
5 g.	10.00
2 g.	10.00
1 g.	10.00

(f) Standard weights for testing of high capacity weighing machines:

<i>Denomination</i>	<i>Fee corresponding to Maximum permissible relative error 0.5/10000 in Rs.P</i>	<i>Fee corresponding to Maximum permissible relative error 3.3/10000, 1.7/10000 and 1.0/10000 in Rs.P</i>
<i>(1)</i>	<i>(2)</i>	<i>(3)</i>
100 kg.	150.00	100.00
200 kg.	300.00	200.00
500 kg.	600.00	400.00
1000 kg.	1500.00	1000.00
2000 kg.	3000.00	2000.00
5000 kg.	5000.00	4000.00

2. Capacity Measures:

<i>Denomination</i>	<i>Fee per piece (Rs.P.)</i>
<i>(1)</i>	<i>(2)</i>
100 litre and above	Rs.100 for the 1st 100 litre plus Rs. 14 for every additional 100 litre or part there of Subject to maximum of Rs. 10,000/-
50 litre	100.00
20 litre	40.00
10 litre	40.00
5 litre	20.00
2 litre	20.00
1 litre	20.00
500 ml.	20.00
200 ml.	20.00
100 ml.	20.00

<i>Denomination</i> (1)	<i>Fee per piece (Rs.P.)</i> (2)
100 litre and above	Rs.100 for the 1st 100 litre plus Rs. 14 for every additional 100 litre or part there of Subject to maximum of Rs. 10,000/-
50 ml.	20.00
20 ml.	20.00
10 ml.	20.00
5 ml.	20.00
2 ml	20.00
1 ml.	20.00

3. Length Measures:**(a) Non-Flexible:**

<i>Denomination</i> (1)	<i>Fee per piece</i> (Rs.P.) (2)
2 m.	20.00
1 m.	20.00
0.5 m.	40.00
1 m. graduated (at every cm)	40.00
0.5 m. graduated (at every cm)	40.00

(b) Fabric Plastic / Woven / Steel Tapes:

<i>Accuracy class</i> <i>Denomination</i> (1)	<i>Fee per metre</i> (Rs.P.) (2)
Class-I	2.00
Class-II	2.00
Class-III	1.00

(c) Folding Scales:

<i>Denomination</i> (1)	<i>Fee per piece</i> (Rs.P.) (2)
1 m.	20.00
0.5 m.	20.00

(d) Surveying Chain:

<i>Denomination</i>	<i>Fee per piece</i>
<i>(1)</i>	<i>(2)</i>
30 m.	200.00
20 m.	200.00

4. Beam Scales Class A and B:

<i>Denomination</i>	<i>Fee per piece</i>
<i>(1)</i>	<i>(2)</i>
200 kg.	800.00
100 kg.	600.00
50 kg.	300.00
20 kg.	300.00
10 kg.	300.00
5 kg.	200.00
2 kg.	200.00
1 kg.	200.00
500 g. and below	120.00

5. Beam Scales Class C and D:

<i>Denomination</i>	<i>Fee per piece</i>
<i>(1)</i>	<i>(2)</i>
1000 kg.	400.00
500 kg.	400.00
300 kg.	400.00
200 kg.	200.00
100 kg.	200.00
50 kg.	40.00
20 kg.	40.00
10 kg.	40.00
5 kg.	30.00
2 kg.	30.00
1 kg.	30.00
500 g. and below	20.00

6. Non - Automatic Weighing Instruments - Mechanical (analogue) Class III and IV:

<i>Denomination</i>	<i>Fee per piece</i>
<i>(1)</i>	<i>(Rs.P.)</i>
<i>(1)</i>	<i>(2)</i>
400 t	5000.00
300 t	5000.00
200 t	5000.00
150 t	4000.00
100 t	4000.00
80 t	4000.00
60 t	4000.00
50 t	4000.00
40 t	4000.00
30 t	4000.00
25 t	4000.00
20 t	4000.00
15 t	4000.00
10 t	2000.00
5 t	1000.00
3 t	800.00
2 t	800.00
1500 kg.	600.00
1000 kg.	600.00
500 kg.	600.00
300 kg.	400.00
250 kg.	400.00
200 kg.	200.00
150 kg.	200.00
100 kg.	200.00
50 kg.	200.00
30 kg.	200.00
25 kg.	120.00
20 kg.	120.00
15 kg.	60.00
10 kg.	60.00
5 kg.	60.00
3 kg.	60.00
2 kg.	60.00
1 kg.	30.00
500 g. and below	30.00

7. Non - Automatic Weighing Instruments - Electronic Class III and IV:

<i>Denomination</i>	<i>Fee per piece</i>
<i>(1)</i>	<i>(Rs.P.)</i>
<i>(1)</i>	<i>(2)</i>
400 t	5000.00
300 t	5000.00
200 t	5000.00
150 t	4000.00
100 t	4000.00
80 t	4000.00
60 t	4000.00
50 t	4000.00
40 t	4000.00
30 t	4000.00
25 t	4000.00
20 t	4000.00
15 t	4000.00
10 t	2000.00
5 t	2000.00
3 t	1000.00
2 t	1000.00
1500 kg.	500.00
1000 kg.	500.00
500 kg.	500.00
300 kg.	400.00
250 kg.	400.00
200 kg.	400.00
150 kg.	400.00
100 kg.	400.00
50 kg.	400.00
30 kg.	400.00
25 kg.	400.00
20 kg.	200.00
15 kg.	200.00
10 kg.	200.00
5 kg.	200.00
3 kg.	200.00
2 kg.	200.00
1 kg.	200.00
500 g. and below	200.00

8. (i) Non Automatic Weighing Instruments both Mechanical and Electronics Class I and II:

<i>Capacity (1)</i>	<i>Fee (Rs.P.) (2)</i>
Exceeding 50 t	5000.00
Not exceeding 50 t but exceeding 10 t	4000.00
Not exceeding 10 t but exceeding 1 t	2000.00
Not exceeding 1 t but exceeding 50 kg.	1000.00
Not exceeding 50 kg. but exceeding 10 kg.	500.00
Not exceeding 10 kg.	400.00

(ii) Automatic Weighing Instrument:

<i>Capacity (1)</i>	<i>Fee (Rs.P.) (2)</i>
Exceeding 100 t	5000.00
Not exceeding 100 t but exceeding 50 t	5000.00
Not exceeding 50 t but exceeding 10 t	4000.00
Not exceeding 10 t but exceeding 1 t	2000.00
Not exceeding 1 t but exceeding 50 kg.	1000.00
Not exceeding 50 kg. but exceeding 10 kg.	500.00
Not exceeding 10 kg.	400.00

9. Volumetric Measuring Instrument:

(a) Dispensing pumps each pump	Rs. 2000.00 per unit
(b) Totalizing counter	Rs. 1000.00 per unit

(c) Other Instruments:

<i>Capacity (1)</i>	<i>Fee (Rs.P.) (2)</i>
Exceeding 100 litre	Rs. 1000.00 for the 1st 100 litres plus Rs. 500.00 for every additional 100 litres or part thereof
Not exceeding 100 litre but exceeding 50 litre	1000.00
Not exceeding 50 litre but exceeding 20 litre	500.00
Not exceeding 20 litre	400.00

10. Flow meters:

Flow rate up to 100 litre/min.	Rs. 4000.00
Above 100 litre/min. upto 500 litre/min.	Rs. 5000.00
Above 500 litre/min.	Rs. 5000.00

11. Linear Measuring Instruments:

Taxi, Autorikshaw Meters	Rs. 200.00
Other Meters	Rs. 100.00 for the 1st 1000 m. or part thereof Plus Rs. 10.00 for every additional 100 m. or part thereof

12. Clinical Thermometer Rs. 1.00 per unit

13. Water Meter Rs. 50.00 per unit

14. Peg Measure:

30 ml.	Rs. 100.00
60 ml.	Rs. 100.00
100 ml.	Rs. 100.00

15. Compressed Natural Gas Dispensers Rs. 2000.00 per unit

16. Liquefied Petroleum Gas Dispensers Rs. 2000.00 per unit

17. Counter Machine:

(i) Counter Machine upto capacity of 10 kg.	Rs. 40.00
(ii) Counter Machine above capacity of 10 kg.	Rs. 100.00"

SUNIL PALIWAL,
Principal Secretary to Government.