



Consent to Operate (CTO) - After Consent to Establish - from Tamil Nadu Pollution Control Board

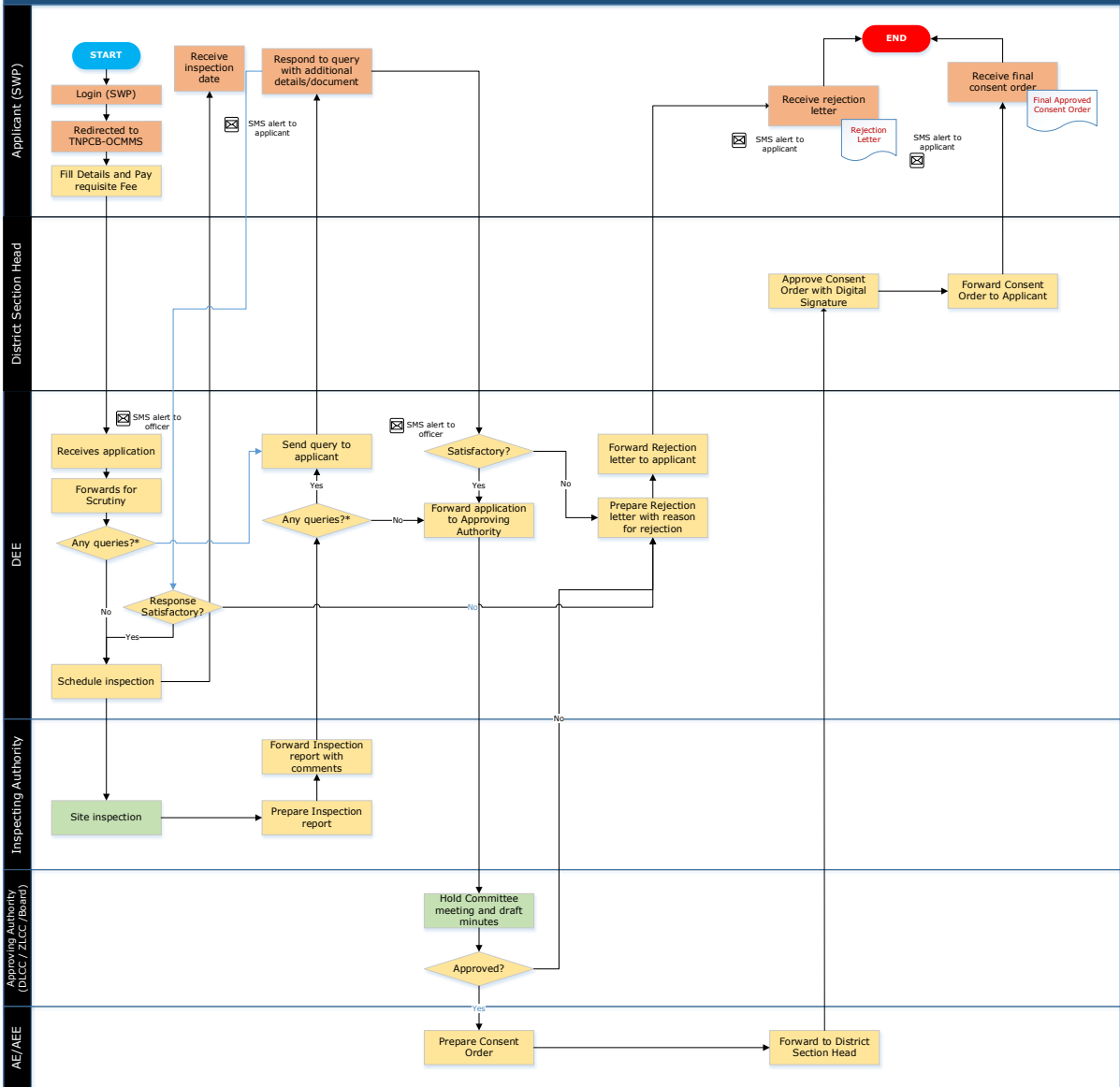
Procedure, List of Supporting Documents, and Fees

Table of Contents

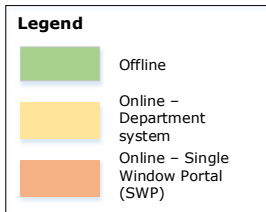
1 Procedure	1
2 Checklist of supporting documents	2
3 Fees.....	2

1 Procedure

Consent to Operate (CTO) - After Consent to Establish - from Tamil Nadu Pollution Control Board



* The concerned official can return the entire application as well to the applicant for them to edit and send it back



2 Checklist of supporting documents

S. No.	Document
1.	Covering requisition letter stating the project status of the industry and activities clearly
2.	Compliance statement on the CTE special conditions stipulated under Water & Air Acts
3.	Auditor Certificate with break up details for the actual Gross fixed Assets (final cost) duly certified by a Chartered Accountant in the prescribed format Note - Audited balance sheet is compulsory for all large and medium scale industries
4.	Photographs of the provided measures of ETP/APC/ other compliances of conditions (if applicable)
5.	Compliance statement on the EC conditions stipulated under EP Act (if applicable)
6.	Agreement with Common Treatment Storage and Disposal Facility (TSDF) / Common Bio-Medical Waste Treatment Facility(CBMWTF) (If applicable)

3 Fees

S.No	Gross Fixed Assets (based on the details given in application form)	Amount of Consent Fee (in INR)		
		Red Category	Orange Category	Green Category
1.	Up to Rs. 1 Lakhs	400	300	200
2.	Above Rs. 1 Lakhs and up to Rs. 2. Lakhs	700	600	400
3.	Above Rs. 2 Lakhs and up to Rs. 3 Lakhs	900	700	600
4.	Above Rs. 3 Lakhs and up to Rs. 4 Lakhs	1100	1000	800
5.	Above Rs. 4 Lakhs and up to Rs. 5 Lakhs	1300	1100	1000
6.	Above Rs. 5 Lakhs and up to Rs. 6 Lakhs	1700	1500	1200
7.	Above Rs. 6 Lakhs and up to Rs. 7 Lakhs	2000	1700	1400
8.	Above Rs. 7 Lakhs and up to Rs. 8 Lakhs	2200	2000	1600
9.	Above Rs. 8 Lakhs and up to Rs.9 Lakhs	2400	2100	1800
10.	Above Rs. 9 Lakhs and up to Rs. 10 Lakhs	2600	2400	2000
11.	Above Rs. 10 Lakhs and up to Rs. 15 Lakhs	3700	3100	2500
12.	Above Rs. 15 Lakhs and up to Rs.20 Lakhs	4400	3600	3000
13.	Above Rs. 20 Lakhs and up to Rs.25 Lakhs	5000	4200	3500
14.	Above Rs. 25 Lakhs and up to Rs.35 Lakhs	6000	4900	4100
15.	Above Rs. 35 Lakhs and up to Rs.45 Lakhs	7400	5600	5100
16.	Above Rs. 45 Lakhs and up to Rs.55 Lakhs	8900	7400	6100
17.	Above Rs. 55 Lakhs and up to Rs.65 Lakhs	10400	8400	7100

S.No	Gross Fixed Assets (based on the details given in application form)	Amount of Consent Fee (in INR)		
		Red Category	Orange Category	Green Category
18.	Above Rs. 65 Lakhs and up to Rs.75 Lakhs	13100	10500	8100
19.	Above Rs. 75 Lakhs and up to Rs. 1 Crore	16300	12600	10100
20.	Above Rs. 1 Crore and upto Rs. 5 Crores	21800	17900	14200
21.	Above Rs. 5 Crores and upto Rs. 10 Crores	Rs.105/- Per Lakh	Rs.65/- Per Lakh	Rs. 42/-Per Lakh
22.	Above Rs. 10 Crores and upto Rs. 50 Crores	Rs.105000/- +Rs.40/- Per Lakh	Rs.65000/- +Rs.30/- Per Lakh	Rs.42000/- +Rs.12/-Per Lakh
23.	Above Rs. 50 Crores and upto Rs. 100 Crores	Rs.265000/- +Rs. 23/- Per Lakh	Rs.185000/- +Rs.15/- Per Lakh	Rs. 90000/- +Rs.12/-Per Lakh
24.	Above Rs. 100 Crores and upto Rs. 1000 Crores	Rs.380000/- +Rs.5/-Per Lakh	Rs.260000/- +Rs.4/-Per Lakh	Rs.150000/- +Rs.3.00 Per Lakh
25.	Above Rs. 1000 Crore	Rs.830000/- +Rs. 3/- Per Lakh (Max Rs. 31 Lakhs)	Rs.620000/- +Rs. 2/- Per Lakh (Max Rs.23 Lakhs)	Rs.420000/- +Rs.1/- Per Lakh (Max Rs. 8 Lakhs)

<This space has been intentionally left blank>